



"I HAVE DECIDED TO LOVE GOD FOREVER."

IMPACT.

Young hearts. Changed
today. And forever.

2017 ANNUAL REPORT

HARBORPOINT
MINISTRIES
Connecting Camps & Churches

HARBOR POINT MINISTRIES.

Opening doors to camp.

Our Mission

Harbor Point Ministries partners with its family of owner churches to open doors for campers and guests of all ages to engage with Covenant Harbor and Covenant Point Bible camps, so the transforming power of the gospel might be unleashed in their lives, and so the work of the local church might flourish.

Harbor Point Ministries

- Shares and supports the mission of camping ministry at Covenant Harbor and Covenant Point, engaging owner churches in the Central Conference, building relationships, and serving and resourcing local congregations
- Aligns Covenant Harbor and Covenant Point with each other, promoting collaboration between staffs and a vision for shared ministry
- Leads in mission and vision of the camping ministry through united governance
- Supports safety and quality at both camps, as well as spiritual and professional staff development
- Creates access to both camps for owner churches through collaborative marketing and scholarships

2017 Snapshot

- 3,567 summer youth campers attended your two camps
- 800+ summer campers met Jesus for the first time, or took a step to walk more closely with him
- 30,000+ children, youth and adults attended programs, retreats, classes and special events at both camps
- \$154,000 in scholarship support helped youth campers attend summer programs
- 150 college-aged students served as summer staff and were trained in leadership for service to the church, their professions and communities
- 48 Central Conference churches sent youth to summer Bible camp

Serving Your Church on the HPM Board of Directors

Dave Anderson, Libertyville, IL
Kristine Brandel, Ravenswood, Chicago
Erik Brorson, Ravenswood, Chicago

HARBORPOINT
MINISTRIES

Connecting Camps & Churches

centralconf.org/camps



“
Two kids in our youth group accepted Christ
this weekend!”

– Local church youth leader

Shalondon Christensen, Oakdale, Chicago
Cheryl Ek, Central Conference Executive Board Liaison
Tom Ek, Galesburg, IL
Steve Farmer, Naperville, IL
Beth Fredrickson, Executive Director, Harbor Point Ministries
Dwight Huse, Kingsford, MI
Anne Jorgensen, Glen Ellyn, IL
Kurt Kovacic, Winnetka, IL
Danny Martinez, Central Conference Superintendent
Megan Nyberg, Iron River, MI
Heather Rose, Lake Geneva, WI
Erik Strom, Executive Director, Covenant Point
Rebecca Nakamura, Central Conference Executive Board Chair
Ray Warren, Executive Director, Covenant Harbor
Brian Zahasky, Racine, WI

COVENANT POINT.

Celebrating God's goodness.

Covenant Point celebrates the partnership of our Central Conference churches in advancing the Kingdom of God! As a small camp and retreat center in a wilderness setting, Covenant Point desires to serve and come alongside your ministry with our unique set of resources for evangelism, discipleship and leadership development.

Wilderness Campaign

The Wilderness Campaign successfully concluded in 2017. In less than two years, 242 donor families, individuals and foundations contributed \$338,000 - surpassing the \$300,000 goal! Campers of all ages have benefitted from the resources and improvements made possible because of this campaign, and Covenant Point's long-term ministry has been strengthened.

Island Showcased

Covenant Point's Island camp was highlighted in August on a regional television program, *Discovering*. The show's host, Brian Whitens, spent the day with a group of Islanders to capture the unique activities, lodging, and community experienced by campers and staff. The segment can be viewed on YouTube.

Covenant Point History Book Now Available

An historical narrative of CPBC's ministry, written by staff alumnus, Dr. Mark Safstrom, assistant professor of Scandinavian Studies at Augustana College, is now available for purchase! *Silliness & Stillness: A History of Covenant Point Bible Camp in Michigan's Upper Peninsula*, is a 140-page compilation of stories, color photos, and reflections highlighting 90 years of activity, 1926-2016. The cost is \$30 (plus \$7 mailing charge) and can be purchased at the CPBC display or by contacting the camp office.

Summer 2017 by the Numbers

It was a great summer, with many moments encompassing our core values: stillness and silliness, deep discipleship, passion for wilderness and adventure, space to lead, excellent care and first-hand knowledge.

- 6 weeks Island camp, 5 weeks Mainland youth camp, 3 weeks Family Camp, 6 weeks wilderness trips
- 662 total youth campers and 36 Family Camp families
- 11 women on Venture Out Women's backpacking trip
- The camp kitchen went through 1,800 lbs. of flour, 15,480 eggs, 78.5 lbs of lettuce, 640 lbs. of ground beef, and

“My child went from not liking chapel or talking about God to being excited about reading her Bible.”

– Camper parent



a total of 32,909 meals served (beginning with Purdue University in May)

- \$36,000 financial aid disbursed to help 150 campers (given by donors and foundations)
- 41 summer staff
- 25 high school work crew members (split between two sessions)
- 11 volunteers who helped fill short-term staffing gaps
- 26 athletes in the Triathlon, raising almost \$15,000, to subsidize the Autism Spectrum Disorder Family Camp (attended by 10 families)
- Three *One Life* winter retreat weekends totaled 355 junior/senior high school age youth from 30 Central Conference churches



cpbc.com

COVENANT HARBOR.

Love kids, share Jesus.



covenantharbor.org

The rededication of the historic Carriage House following a fire that gutted the interior of the building highlighted Covenant Harbor's 70th year of ministry. With the main floor transformed as a chapel that seats 300, and the lower floor transformed as the summer infirmary and housing for retreats, the building has become a tremendous tool for ministry. Retreat groups appreciate the intimate setting of the chapel for worship and summer nurses appreciate the infirmary's central location with a ground-level entrance.

God's Blessing in Ministry

- 944 campers and counselors participated in five winter retreats
- 1,326 pancake breakfasts were served at the annual Maple Fest Open House in March, supported by 121 volunteers and staff
- 2,744 campers participated in summer camps, making 2017 a record-breaking summer
- 75 summer staff *Loved Kids and Shared Jesus*
- 139 campers made first time decisions to begin a relationship with Jesus, and another 656 decided to become more intentional about living their faith. A total of 795 campers made significant decisions as a result of being at camp.
- 2,308 people participated in the Summer Sunday Worship Series
- \$118,000 in scholarship assistance was provided to campers in need
- The annual Golf for Kids tournament in September generated \$37,000 for scholarships for summer 2018

- Operating revenue covered all operating expenses, enabling contributions to be used for scholarships and capital improvements

Statistics are informative, but the impact of camp is changed lives. As Covenant Harbor draws people of all ages from their routines into opportunities to enjoy creation, recreation and relationships, so that all will experience God through Jesus Christ, it is exciting to hear how camp impacts participants.

"I came here as a middle school camper and here I am, back again for the first time as a youth group leader –can't believe that I'm actually on the other end of camp as an adult! This camp is special! This afternoon I got to show my kids where I prayed with my counselor to accept Christ and they were blown away that it was here at Covenant Harbor," shared a counselor from a Presbyterian youth group during winter camp.

A summer camper noted, *"It was fun moving away from the distractions and focusing more on God."* Another wrote, *"I had a lot of fun and I strengthened my relationship with God! I also learned to take risks."*

As the Lord continues to change lives at camp, we look forward to our owner churches sending more campers and scheduling more retreats in the year ahead. Your continued prayers for this life-changing ministry are appreciated!



Two students from our group had been at odds with one another. We were concerned about how things would go during the retreat. God changed their hearts and they decided to bury the hatchet! They asked the kids in the group to forgive them for making life difficult for everyone."

– Local church youth leader





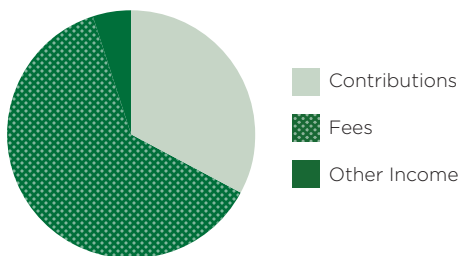
COVENANT POINT

Statement of Financial Position

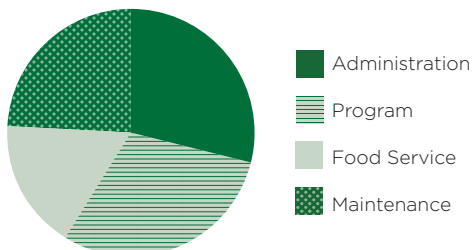
Year Ended November 30, 2017

ASSETS	
Cash and Deposits	\$ 229,395
Inventory	<u>9,024</u>
TOTAL CURRENT ASSETS	\$ 238,419
PROPERTY & EQUIPMENT	
Land and Buildings	\$ 4,461,799
Furniture and Fixtures	524,916
Equipment	<u>135,301</u>
TOTAL PROPERTY & EQUIPMENT	5,122,016
Less Accumulated Depreciation	<u>(3,632,578)</u>
NET PROPERTY & EQUIPMENT	1,489,438
TOTAL ASSETS	\$ 2,107,281
LIABILITIES	
Accounts Payable & Accrued Expenses	\$ 6,613
Deferred Revenue	<u>34,680</u>
Total Current Liabilities	\$ 41,293
NET ASSETS	
Unrestricted	\$ 1,626,744
Temporarily Restricted	<u>439,244</u>
	2,065,988
TOTAL LIABILITIES & NET ASSETS	\$ 2,107,281
NET ASSETS, BEGINNING OF YEAR	
Change in Net Assets	<u>73,131</u>
NET ASSETS, END OF YEAR	\$ 2,065,988

INCOME



EXPENSES



Note: This is a brief summary of financial activities and position. A complete review of financial statements is available upon request:
Covenant Point Bible Camp | 358 W. Hagerman Lake Road | Iron River, MI 49935



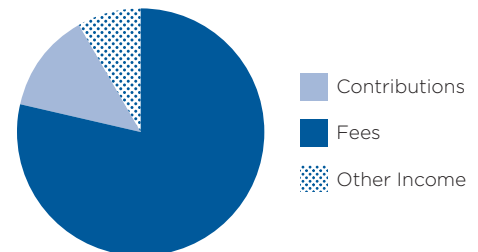
COVENANT HARBOR

Statement of Financial Position

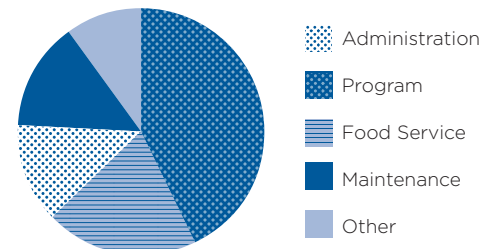
Year Ended November 30, 2017

ASSETS	
Cash and Cash Equivalents	\$ 349,451
Investments	235,715
Accounts Receivable, Net	162,296
Inventories	33,206
Prepaid Expenses	26,373
Property and Equipment	8,422,784
Beneficial & Split Interest Agreements	<u>35,758</u>
TOTAL ASSETS	\$ 9,265,583
LIABILITIES	
Accounts Payable	\$ 74,269
Accrued Expenses	143,964
Deferred Revenue	<u>166,412</u>
TOTAL LIABILITIES	\$ 384,645
NET ASSETS	
Unrestricted	\$ 8,649,212
Temporarily Restricted	<u>321,726</u>
	8,880,938
TOTAL LIABILITIES & NET ASSETS	\$ 9,265,583
NET ASSETS, BEGINNING OF YEAR	
Change in Net Assets	<u>759,446</u>
NET ASSETS, END OF YEAR	\$ 8,880,938

INCOME



EXPENSES



Note: The change in net assets of \$759,446 includes insurance proceeds of \$483,622 for the Carriage House restoration, which inflates the actual change in net assets. Without insurance proceeds, the actual change in net assets from operations is \$272,824 after depreciation. A complete audit report is available upon request.
Covenant Harbor Bible Camp | 1724 W Main St. Lake Geneva, WI | 53147

HARBORPOINT MINISTRIES

Connecting Camps & Churches

HARBOR POINT MINISTRIES

Statement of Financial Position

Year Ended November 20, 2017

ASSETS

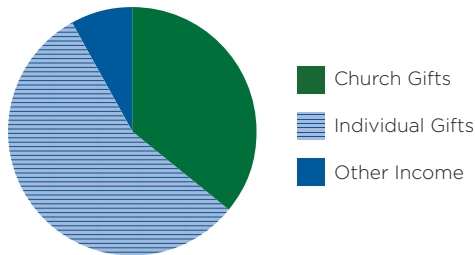
Checking/Savings	
Checking	\$ 29,380
Covenant Trust Endowment	148,867
National Covenant Properties DIA	<u>5,500</u>
TOTAL ASSETS	\$ 183,747

LIABILITIES

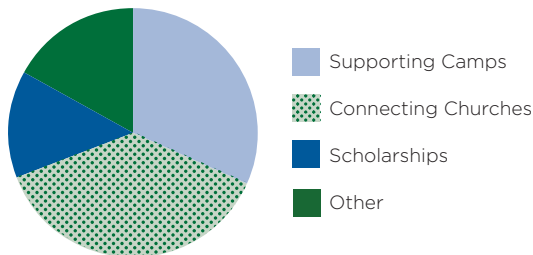
Accounts Payable	\$ 703
Taxes Payable	<u>534</u>
Total Current Liabilities	1,237
Long Term Liabilities: Endowment	<u>148,867</u>
TOTAL LIABILITIES	\$ 150,104

NET ASSETS, BEGINNING OF YEAR	\$ 149,125
Change in Net Assets	<u>34,621</u>
NET ASSETS, END OF YEAR	\$ 183,746

INCOME



EXPENSES



www.centralconf.org/camps

www.cpbpc.com • www.covenantharbor.org



“

I fully believe that camp ministry draws our youth closer to God and weekly service in a local church.”

— Pastor Tom Crozier, JPUSA Evangelical Covenant Church

We are grateful to the following churches that financially supported the camping ministry of the Central Conference in 2017:

ILLINOIS

Batavia
Belvidere
Blue Island-Mission
Campton Hills-Country
Chicago-Beverly
Edgebrook
Grace
Iglesia Jerusalem
North Park
Crystal Lake-Hope
DeKalb-Hillcrest
Elgin
Galesburg
Glen Ellyn
Hinsdale
Joliet-Good Shepherd
Libertyville
Moline-
Elim
First
Mt. Prospect-Northwest
Naperville
Northbrook
Oak Lawn-Trinity
Orland Park-Hope

Paxton
Rockford-
Broadway
First
Wheaton-Faith
Wilmette-Winnetka

MICHIGAN

Carlshend-Community
Foster City
Gladstone-United
Iron Mountain-First
Iron River-Grace
Norway
Stephenson-
Bethlehem
Lost Lake

WISCONSIN

Beloit-Redeemer
Boulder Junction-Community
Church
Elkhorn-Millard
Green Bay-Bay
Lake Geneva-Anchor
Milwaukee
Sheboygan-Zion